

Awaken
...YOUR...
PURPOSE



FAST FACTS

LOCATED IN
CENTRAL, SOUTH CAROLINA

FOUNDED IN **1906**

350 ACRE MAIN CAMPUS



PRIVATE, NONPROFIT UNIVERSITY

OWNED BY THE WESLEYAN CHURCH



MEMBER OF THE CCCU
(COUNCIL FOR CHRISTIAN COLLEGES
AND UNIVERSITIES)



63%



37%

63% LIVE ON CAMPUS; 37% COMMUTERS

VARIOUS OPPORTUNITIES FOR
STUDENT LEADERSHIP ON CAMPUS



29 STATES AND
15 COUNTRIES REPRESENTED



100%

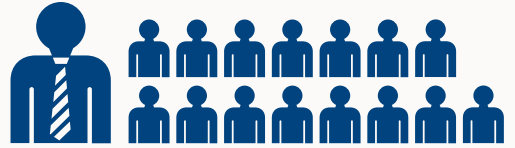
OF FRESHMAN AND TRANSFER STUDENTS
RECEIVE FINANCIAL AID WITH AN
AVERAGE ANNUAL PACKAGE OF **\$25,369**
PLUS WORK STUDY OPPORTUNITIES



SWU RANKS IN THE TOP 30%
OF CCCU INSTITUTIONS FOR
LOWEST TUITION RATES



THE AVERAGE SOUTHERN WESLEYAN UNIVERSITY GRADUATE FINISHES WITH \$23,949
IN LOAN DEBT. THIS COMPARES TO THE NATIONAL AVERAGE OF \$30,123 AS OF 2016.
SOURCE: INSTITUTE FOR COLLEGE ACCESS & SUCCESS



AVERAGE CLASS SIZE: 15

800+

TRADITIONAL STUDENTS

40+

AREAS OF STUDY

15+

STUDENT CLUBS AND
ORGANIZATIONS

19

INTERCOLLEGIATE SPORTS

175

STUDENT ATHLETES ON THE
CONFERENCE CAROLINAS
PRESIDENTIAL HONOR ROLL



Division II

NATIONAL CHRISTIAN COLLEGE
ATHLETICS ASSOCIATION



17
NCCAA NATIONAL
CHAMPIONSHIP TITLES
SINCE 2007

At Southern Wesleyan University, we believe God created you for a unique purpose.

We believe you were meant to impact the world for good. We believe God has called each of us to live a life of learning, intentional community, and service to others.



Unexpected Second Chances

Despite losing my best friend in a tragic car accident the semester before I came to SWU, I encountered beautiful examples of the love of Christ and cultivated amazing friendships. As a result of this nurturing community, I was able to continue to pursue my calling to work with worship production and other ministries.

AMBER COLLINS - Media Communication, Class of 2017



Transforming Passions into Purpose

Even though I came to SWU with a passion for music and not much else, God knew exactly what I was supposed to do when I arrived. God took this awesome thing I was already passionate about and transformed it into something much bigger than myself. Best of all, He transformed me through the experience.

PATRICK HAMPTON - Music, Class of 2018



Preparing for a Calling

What I uncovered at SWU was a supportive community and a place ripe with opportunity for success. From being challenged in the classroom to pursuing internships and real-world experience, I was constantly challenged to excel, and I thrived in this environment.

AKILAH JEFFERSON - Forensic Science, Class of 2017



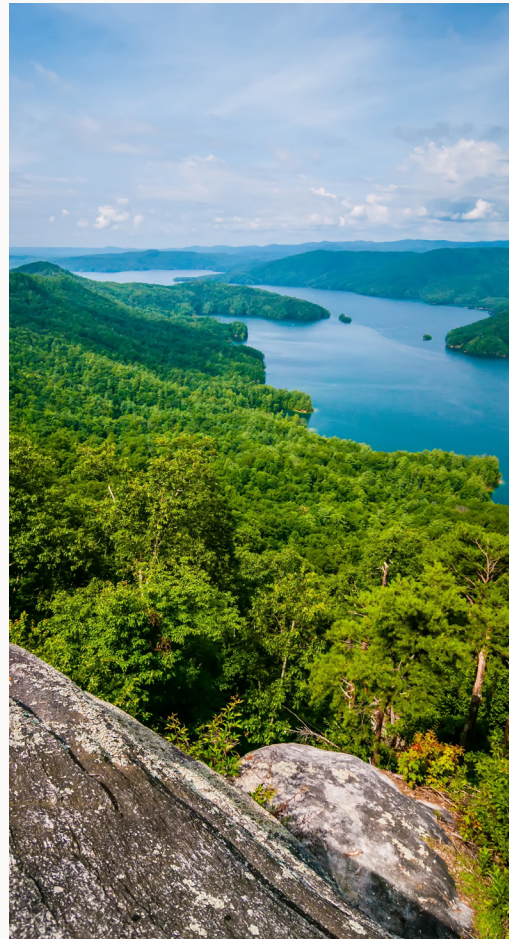
Finding Strength in the Struggle

When I came to SWU I felt the sense of purpose and family atmosphere I had been missing. Through my struggles I questioned my choices, but the people I met and the purpose I found here inspired me to push through and finish college. Now, as I prepare to move back home to Brazil, I am grateful to be a stronger person.

MICHEL HERZENHAUT - Business Administration, Class of 2017



Read the Rest of These Stories
along with many other SWU stories at swu.edu/awaken



.. FIND ..
YOURSELF
Here



SITUATED IN SCENIC UPSTATE SOUTH CAROLINA,

the 350-acre main campus of Southern Wesleyan University is located in the town of Central and surrounded by city life and outdoor attractions. With a major college town just next door, you'll find all kinds of shops and restaurants nearby. Just a half hour from campus you can find tons to do in Greenville, a city with a nationally-recognized, award-winning downtown full of shops, restaurants, parks, theaters, and more. Even Charlotte and Atlanta are only a couple hours away.

If you're looking for adventure outdoors, SWU is perfectly located within minutes of beautiful lakes, mountains, waterfalls, and parks. Hike on the Foothills Trail or spend some time in the sun at Lake Hartwell. Whether it's backpacking or kayaking, you can find your adventure here.

To find out more about the endless activities to do around SWU, visit swu.edu/upstate

Area Activities



CANOEING



HIKING



CAMPING



MOUNTAIN BIKING



SHOPPING



THEATERS



DINING



“With beautiful lakes, mountaintop views, or just space for a relaxing afternoon in my hammock, there are always fun things to do and new places to discover!”

JONATHAN STEGENGA, SWU GRADUATE

A student is looking at a computer monitor displaying a waveform graph. The image is overlaid with a green tint and text.

LEARNING OPPORTUNITIES

- HONORS PROGRAM
- FACULTY-LED OVERSEAS TRIPS
- SEMESTER ABROAD PROGRAMS
- RESEARCH GRANTS



Inventive LEARNING

A group of students are sitting at a table, working on laptops. They are looking at the screens and talking to each other.

95% of SWU graduates were working, enrolled in graduate schools, or serving in the military within 6 months of graduation

78% of survey respondents reported employment in a position related to their major area of study

Data from submitted surveys of 2015-2016 SWU graduates taken 6 months after graduation

The college experience is all about learning and growing, so why limit that to sitting at a desk or in a lecture hall? At Southern Wesleyan University, we think you can do better. **Each program incorporates real-world experiences**, such as competitive internships for business majors, student teaching for education majors, forensic lab training for criminal justice majors, and real client video projects for media communication majors.

At Southern Wesleyan, we believe God created you for a purpose. **No matter what field of study or profession you want to pursue, our caring and passionate professors will mentor and train you to impact the world for Christ.** With Southern Wesleyan's small class sizes, dedicated faculty, and selection of more than 40 distinctive academic programs, you can be confident that you will receive the personal attention you need to feel prepared and be successful in following Christ through your life and future career.

Areas of Study

COLLEGE OF ARTS AND SCIENCES

Division of Fine Arts

- Church Music
- Music
- Music Education

Division of Humanities

- English
- English Education
- History
- Media Communication
Mass Media Studies
Media Production
- Social Studies Education

Division of Religion

- Religion
Bible
Children's Ministry
Christian Ministry
Christian Worship
New Testament Greek
Sports Ministry
Youth Ministry

Division of Science

- Biology
- Biology Education

- Chemistry
- Computer Information Systems
Business Informatics
Media Informatics
Music Informatics
- Environmental Studies
- Exercise Science
- Forensic Science
- Mathematics
- Mathematics Education
- Pre-Medicine/Pre-Dentistry

Division of Social Sciences

- Criminal Justice Studies
- Human Services
Administration
Counseling
Criminal Justice
Marriage and Family Services
- Psychology
Counseling
Criminal Justice
Developmental Psychology
Human Services
- Recreation and Sport Management
Administration in Athletics & Recreation
Outdoor Leadership

SCHOOL OF BUSINESS

- Business Administration
Accounting
Economics & Finance
Entrepreneurship
General Business
Human Resources Management
Marketing
Supply Chain Management

SCHOOL OF EDUCATION

- Biology Education
- Early Childhood Education
- Early Childhood and Family Studies
- Elementary Education
- English Education
- Mathematics Education
- Music Education
- Physical Education
Coaching
Fitness for Aging
- Social Studies Education
- Special Education

Concentrations offered within majors in italics



FAITH-FILLED *Community*



Ask a Southern Wesleyan student what's so special about our school, and there's a good chance you'll hear the word "community." While many private universities like to use that term, none can claim the faith-filled community present at SWU. From move-in day to graduation, you'll experience our intentional community, holistic personal experiences, and social development opportunities within our Christ-centered environment.

There's always something going on at SWU. In the stands of a Warriors game, in the residence halls, at the campus coffee shop, or in the meetings and activities of various student clubs and organizations, Southern Wesleyan students are doing life together. The community atmosphere is what makes this place captivating.

Campus Life Activities



**BLUE HILL COFFEE AND
TEA COMPANY**



OUTDOOR REC COURTS
(sand volleyball, basketball, tennis)



ENO HAMMOCK PARK



**RESIDENCE HALLS WITH
VARIOUS COMMUNITY ASPECTS**



FINE ARTS EVENTS



**STUDENT CLUBS AND
ORGANIZATIONS**



HUNDRED ACRE WOODS
(hiking trails and challenge course)



ATHLETIC SPORTING EVENTS



INTRAMURAL SPORTS



"I've always loved the personal attention I get at SWU—from my first time on campus through my senior year."

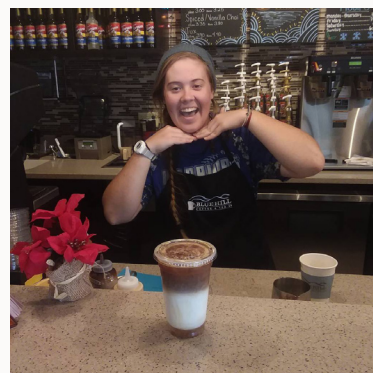
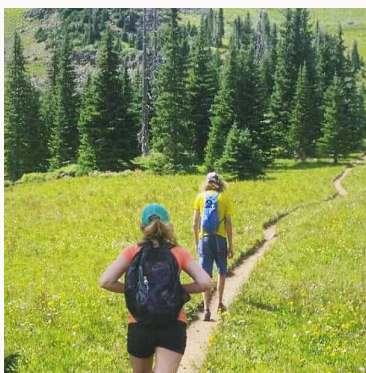
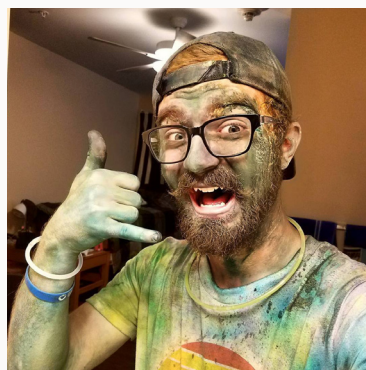
TIANA ROBBINS, SWU GRADUATE



#SWULIFE

@swu_edu







Centered
... ON ...
CHRIST



At the center of Southern Wesleyan University is an unwavering dedication to Jesus Christ and the relentless pursuit of His Kingdom and work in our communities, our world, and us. At SWU, students have the opportunity to grow in their faith through worship and learning experiences. You can also put your faith into action through various local serving opportunities, global cross-cultural trips, or traveling summer ministry teams. Wherever you are in your spiritual journey, there are opportunities for you to grow at Southern Wesleyan. **It's really all about helping you find God's purpose for your life, preparing you for that purpose, and sending you out on your journey to impact the world.**

Spiritual Life Activities



CHAPEL EXPERIENCES

Chapel services offer students spiritual growth experiences through a wide variety of special guest speakers, music styles, and other unique worship opportunities.



DISCIPLESHIP GROUPS

Each semester, students may participate in small groups, usually led by faculty and staff members, focused around the study of a particular topic, book, or serving opportunity.



MINISTRY TEAMS

Student ministry teams travel throughout the summer to represent SWU and minister as camp counselors at various youth camps across the eastern United States. One ministry team is also a worship band who leads worship at camps.



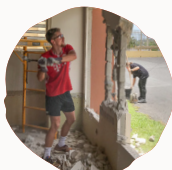
LOCAL SERVING OPPORTUNITIES

SWU offers various serving opportunities throughout the school year, such as the Day of Service, a day each spring when all classes are cancelled so that students, faculty, and staff may invest their day serving in local food banks, ministry centers, and other nonprofits.



CHAPEL WORSHIP & PRODUCTION

Our chapel services are enhanced with the dedicated help of our student worship and production teams, from musicians to lighting designers to camera operators.



GLOBAL MISSION TRIPS

Each year, students have the opportunity to go on international missions trips to serve alongside SWU alumni in global ministry work.



NCCAA NATIONAL CHAMPIONSHIPS

OUTDOOR MEN'S TRACK & FIELD

Triple Jump - 2016,
4x100 - 2017 & 2018
100M - 2018, 200M - 2018

OUTDOOR WOMEN'S TRACK & FIELD

400M - 2015, 4x100 - 2016
100M Hurdles - 2016, 2017 & 2018

INDOOR WOMEN'S TRACK & FIELD

4x400 - 2015 & 2016

MEN'S SOCCER

2013 & 2015

MEN'S INDIVIDUAL GOLF

2013

WOMEN'S BASKETBALL

2007

MEN'S BASEBALL

2007



Whether you play on an intercollegiate team, an intramural team, or you are on the sidelines cheering on your classmates, you are a part of Team SWU. Athletics at Southern Wesleyan are not just about winning games and breaking records. The real success happens when our athletes grow through Christ-centered competition to become servant leaders on and off the field.

SWU Warriors compete in 19 intercollegiate sports in the Conference Carolinas of the NCAA Division II, as well as in the South Region of the National Christian College Athletic Association (NCCAA).

INTERCOLLEGIATE SPORTS



BASEBALL
Men's



SOFTBALL
Women's



BASKETBALL
Men's & Women's



TENNIS
Men's & Women's



CROSS COUNTRY
Men's & Women's



INDOOR TRACK & FIELD
Men's & Women's



GOLF
Men's & Women's



OUTDOOR TRACK & FIELD
Men's & Women's



LACROSSE
Women's



TRIATHLON
Women's



SOCCER
Men's & Women's



VOLLEYBALL
Women's

INTRAMURAL SPORTS



BASKETBALL



SOFTBALL



FLAG FOOTBALL



VOLLEYBALL



SOCCER



TABLE TENNIS



INVESTING
• In Your •
FUTURE



COLLEGE IS A LIFE-CHANGING EXPERIENCE, BUT ALSO A LIFE-CHANGING INVESTMENT.

At Southern Wesleyan, we want our graduates to experience strong career achievements and find success for themselves and their families. **But our ultimate goal is to provide a meaningful, inspiring, and life-changing college experience that prepares students to impact the world for Christ—a different kind of value.**

College may be one of the biggest expenses you encounter over the next few years, but it can be one of the best investments you'll ever make—and we'll help you every way we can. Take advantage of a variety of scholarships, grants and loans through institutional, federal and state assistance. **This past academic year, 100 percent of Southern Wesleyan traditional program freshman and transfer students received some form of financial aid with an average award of \$25,369 (not including work study opportunities).**

Types of Aid Available



ACADEMIC SCHOLARSHIPS



ATHLETIC SCHOLARSHIPS



MUSIC SCHOLARSHIPS



DONOR SCHOLARSHIPS



**PALMETTO BOYS AND GIRLS
STATE SCHOLARSHIPS**



**SWU FELLOWS FOR
PALMETTO FELLOWS**



**CHURCH MATCHING
SCHOLARSHIP**



**FEDERAL WORK STUDY
PROGRAM**



**STATE SCHOLARSHIPS
AND GRANTS**



**FEDERAL GRANTS AND
LOANS**



**OUT OF STATE
SCHOLARSHIP**

BASIC FULL TIME EXPENSES

(2018 -2019)

TUITION FOR THE YEAR	\$24,926
COMBINED FEES FOR YEAR	\$550
ROOM FOR YEAR (DOUBLE)	\$4,110 (minimum)
BOARD FOR YEAR	\$4,920
TOTAL BASIC COSTS	\$34,506

AVERAGE AID PACKAGE

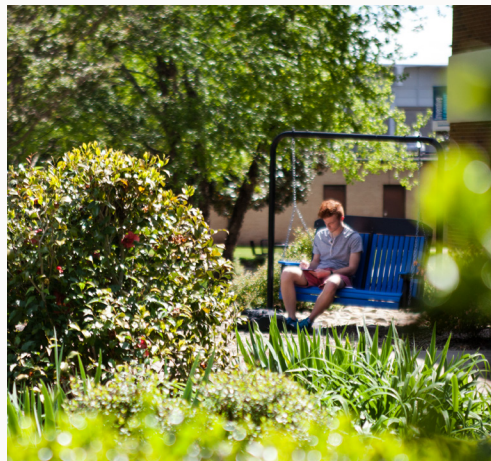
(2017 -2018)

SCHOLARSHIPS AND GRANTS	\$18,128
LOANS	\$7,241
TOTAL AID PACKAGE	\$25,369

Additionally, work study opportunities are available on campus.



• • *Ready to* • •
DISCOVER SWU
FOR YOURSELF?



VISIT OUR CAMPUS

PREVIEW DAYS

Experience campus firsthand through the eyes of a SWU student, take a campus tour, hear about our Christ-centered academic programs from professors, speak with financial aid and admissions professionals, and enjoy a meal on campus.

Monday, September 17, 2018

Friday, October 26, 2018

Monday, November 12, 2018

Monday, February 18, 2019

Friday, March 22, 2019

Monday April 15, 2019

Friday, June 14, 2019

PERSONAL VISITS

Personal campus visits are scheduled Monday-Friday and include a campus tour as well as a personal meeting with your admissions counselor to talk about the process of admissions and financial aid.

Visit swu.edu/visit or call 1-877-644-5556 to sign up for a Preview Day or schedule a personal visit. We look forward to meeting you!

APPLY ONLINE

The next step is applying. You can apply online at swu.edu/apply. The application is simple—it can be completed in 10-15 minutes. So get started now—the application is free!

Once the online application is submitted, you'll need to complete these simple steps:

FRESHMEN REQUIREMENTS

- Submit high school transcript
- Submit official SAT and/or ACT scores
- Fill out and submit FAFSA (Free Application for Federal Student Aid) as soon as possible to take full advantage of all aid options

TRANSFER REQUIREMENTS

- Submit all college transcripts
- Fill out and submit FAFSA (Free Application for Federal Student Aid) as soon as possible to take full advantage of all aid options

Sounds easy, right? It's important that you apply as early as possible. This gives us plenty of time to get the most possible aid available for you, reserve your space in class, and reserve campus housing. Apply online today at swu.edu/apply!



SOUTHERN WESLEYAN UNIVERSITY

907 Wesleyan Drive | Central, SC 29630
www.swu.edu | 877.644.5556



SWUadmissions |



@SWU_Admissions |



@SWU_edu

Southern Wesleyan University is accredited by the Southern Association of Colleges and Schools Commission on Colleges to award associate, bachelor's, master's, and doctoral degrees. Contact the Commission on Colleges at 1866 Southern Lane, Decatur, Georgia 30033-4097 or call 404-679-4500 for questions about the accreditation of Southern Wesleyan University. <http://www.sacscoc.org/>